



Release 6 Windows Mobile Software for OPN-2001



computer directions, llc
3 Gamecock Avenue Suite 308-A
Charleston SC 29407

Phone 843-571-2108
Fax 843-766-0105

www.comdirections.com
support@ComDirections.Com

Copyright © Computer Directions, 1997 - 2016
All Rights Reserved

FATS is a registered trademark of Computer Directions, LLC

Installing the FATS R6 Windows Mobile Software

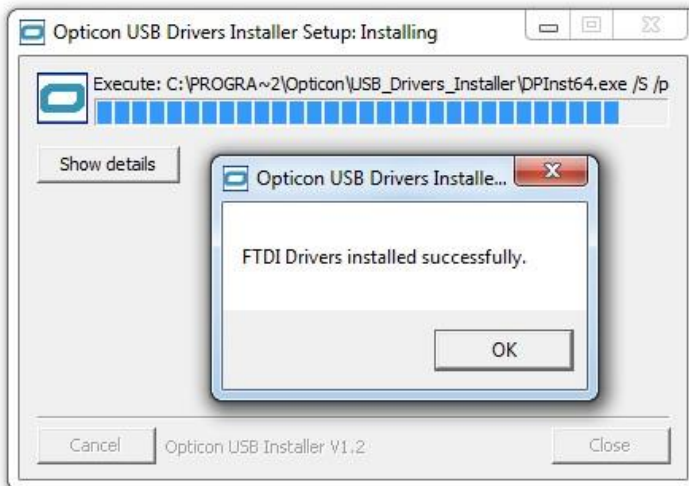
OPN-2001

Use these instructions if you are installing the OPN-2001.

1. Insert the CD-Rom labeled *Fixed Asset Tracking System Release 6*.
2. Open **My Computer** and navigate to the CD-Rom drive.
3. Navigate to the OPN-2001 folder.
4. Double click on **USB Drivers Installer.exe**
 - a (also available at docs.comdirections.com/fats-pc/USB%20Drivers%20Installer.exe)
5. Click **OK** when the ATEN drivers are installed successfully.



6. Click **OK** when the FTDI drivers are installed successfully.



7. Click **OK** when the OPN/OPR drivers are installed successfully.

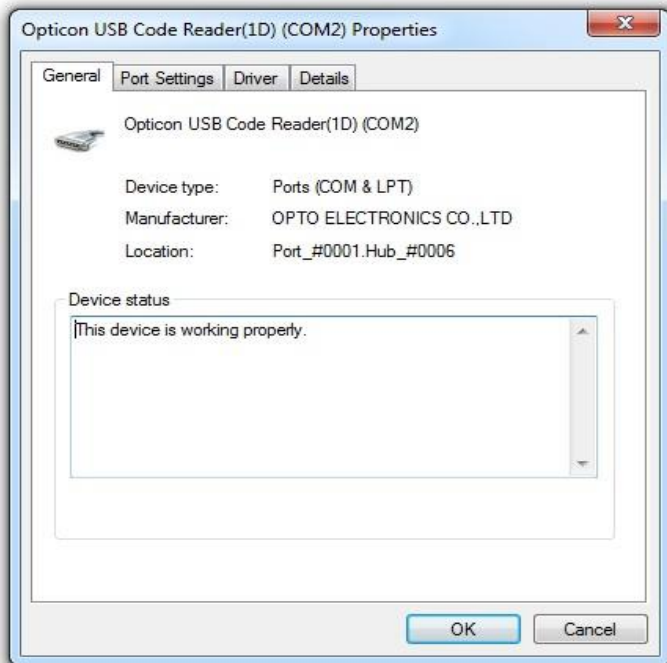


The OPN-2001 scanner has now been installed successfully.

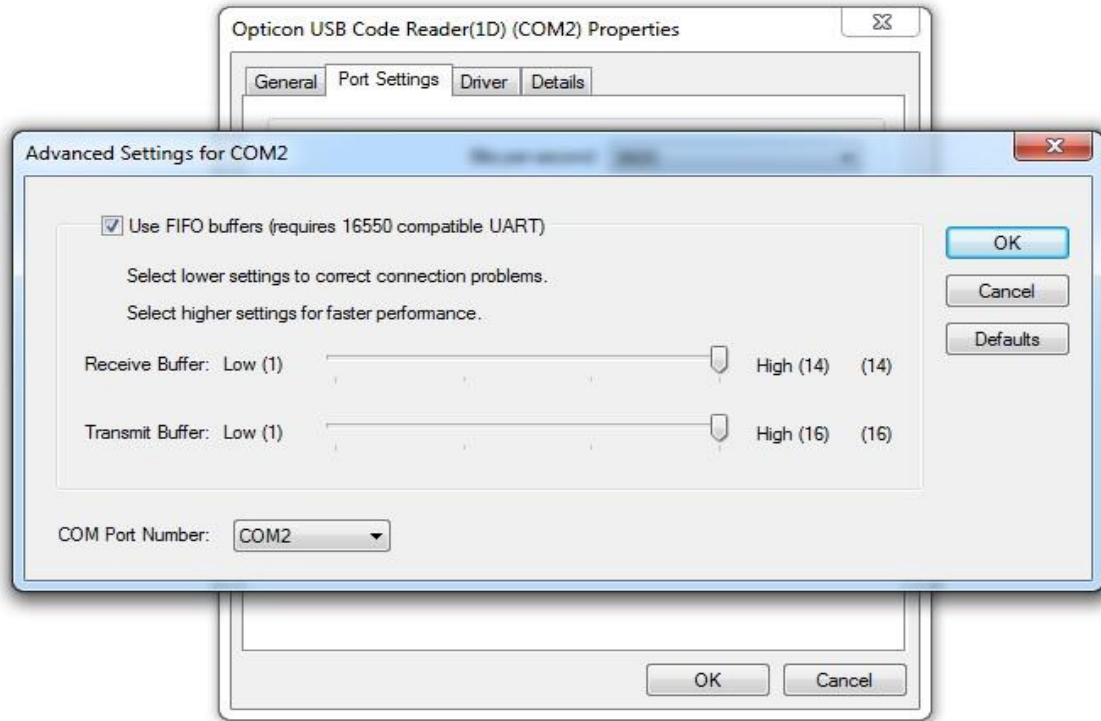
Plug in your OPN-2001 scanner now.

Setting your scanner to the correct COM port.

1. Click the Windows **Start Menu**, then right click on **Computer**, and then click **Manage**.
2. Click **System Tools**, then **Performance**, then **Device Manager**, then **Ports (COM & LPT)**, then right click on your scanner and select **Properties**.



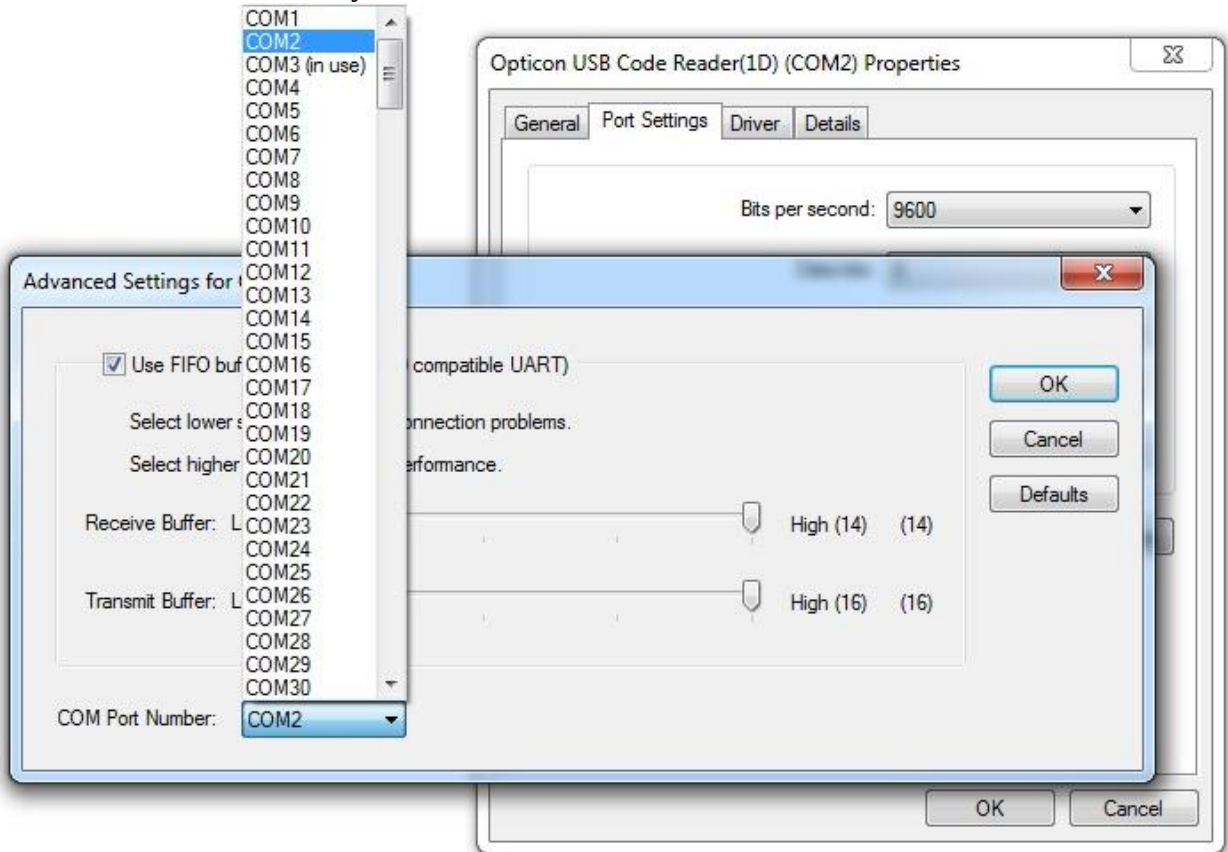
3. Click on the **Port Settings** tab and then on **Advanced**.



4. Click on the drop down arrow for **COM Port Number**. We want to select either **COM1** or **COM2**. If COM2 or COM4 is already in use, then select **COM1**. If COM1 or COM3 is already in use, then select **COM2**.

Please see the next page for an example.

In this case, **COM3** is already in use so the user would have to select **COM2**.



Click OK on the Advanced Settings window and then again on the Opticon USB Code Reader window.

Scanner Operation

See the scanner’s manual for instructions on using the barcode scanner.

Scanner Laser Warnings

The scanners incorporate a Class II laser. The visible laser diode has a maximum output of one milliwatt. Laser light can be dangerous to you or others nearby if it is improperly used. Be sure to observe the caution label on the scanners along with the following cautions:

- Do not look into the laser with a magnifying lens.**
- Do not stare directly into the laser beam.**
- Do not remove the laser caution labels from the scanner.**

The laser is certified for use with the scanner only. Do not connect the laser to any other device.